



KITCHEN COUNTERTOP MACHINES  
POSTFORMING MITER SAWS



CHOICE MACHINERY GROUP



# POSTFORMING MITER SAWS

## CS XL CUTTING STATION

*with Optional Heavy-Duty  
Roller Conveyors*

### STANDARD FEATURES

- Upper and lower frames are machined in a single set up
- Fixed stops at 22.5°, 45°, and 90° (RH & LH side)
- Pneumatic locking pin
- 5 HP saw motor with heavy-duty arbor assembly
- Variable speed forward/reverse drive
- Router system includes four (4) router motors, guiding template, rotating template pin with ball bearing
- Two (2) pneumatic hold down clamps per side
- OSHA-recognized safety Awareness Barriers
- Heavy-duty rear fence
- Three (3) dust collection hookups
- Plexiglass shield
- Ergonomically designed with low profile control panel and sure-grip operator handles
- Sixteen (16) inch (406 mm) saw blade and four (4) router bits
- Safety interlocks and emergency stop

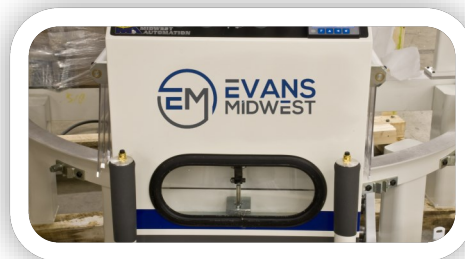


### OPTIONAL EQUIPMENT

- Standard and heavy-duty roller conveyors
- Special wheel conveyors
- Special fences with flip-over stops
- TigerStop electronic fence with automatic positioning
- Laser guideline kit
- Dust manifold
- Variable miter kit with digital readout
- Backsplash clamps
- Support rings for short parts
- Dust enclosure kit
- 5th router motor kit



SURE-GRIP HANDLE



TEMPLATE WINDOW



ROUTER TEMPLATE



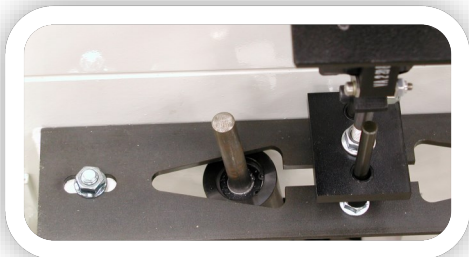
*Domestic Parts and Service  
Dependable, Uninterrupted Service*



*Evans Midwest Cutting Stations produce fast, accurate, precision miter cuts and drawbolt mortises when fabricating postformed kitchen countertops. One operator can produce a complete miter joint with draw bolt mortises in under three minutes. Reduced handling cuts cycle times, operator fatigue and product damage. A great machine, backed by over 50 years of experience, Evans Midwest continues to set the industry standard continually improving product design as technology progresses. Available in models CS XL/XLT.*



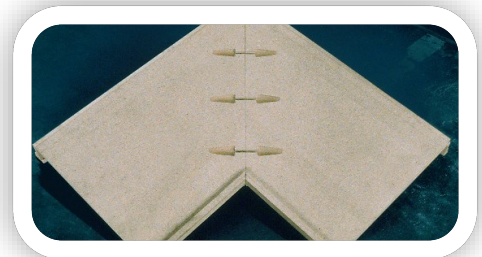
*OSHA-recognized barrier meets ANSI O1.1 safety requirements for woodworking machinery*



ROTATING PIN



ROUTER ASSEMBLY

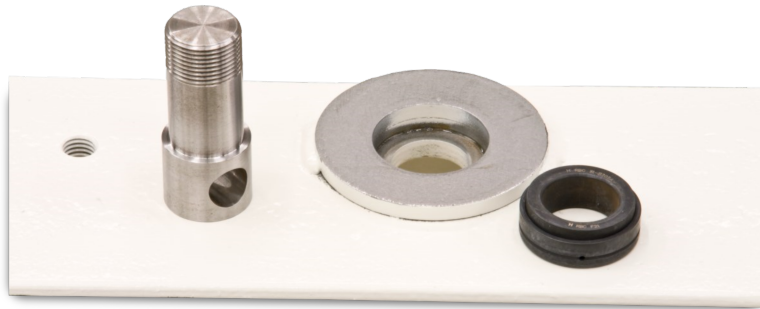


FINISHED PRODUCT

# QUALITY COMPONENTS

*Evans Midwest Cutting Stations are fabricated, welded, machined, assembled and tested at Evans Midwest's 30,000 square foot manufacturing facility located in Holland, Michigan using the latest in machining and fabrication equipment technology.*

*This allows Evans Midwest to control the entire process from ordering raw materials to shipping the machines ensuring the highest quality standards are met.*



## King Pin & Bearing Assembly

*Large diameter king pin and precision bearing mounted in machined pocket ensures stability as it rotates on the lower frame*



## Lower Frame Weldment

*Top surface machined flat to +/- .005 for smooth operation*



## CNC Ver

*Upper and lower frames are machined to maintain the h*

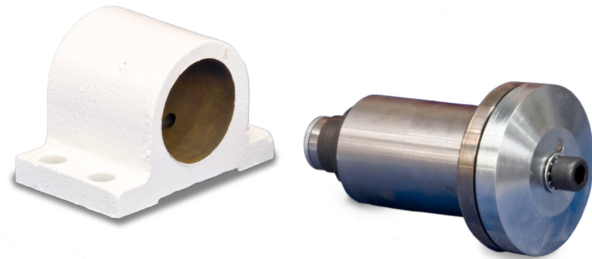


*Domestic Parts and Service  
Dependable, Uninterrupted Service*



**Saw Carriage**

*Mounted on turned, ground and polished rails and bronze bearings for years of dependable service*



**Arbor Assembly**

*Heavy-duty arbor assembly with two (2) precision ball bearings supported by a machined cast iron housing; pre-assembled and bench tested to ensure vibration-free operation*



**Vertical Mill**

*Machine machined in single set up to meet the highest tolerances*



**Rear Fence**

*Front edge is machined straight to +/- .0025 to ensure cutting accuracy*

# CS XL / XLT CUTTING STATIONS

## Model CS XL Cutting Station

The CS XL Signature Cutting Station is our most popular saw and is designed for fabricating a wide variety of kitchen countertop and vanity sizes. The CS XL has an overall cutting length of 53.5 inches (1360 mm) at 90° angle of cut, and 37.5 inches (950 mm) at 45° angle of cut.

Maximum backsplash height is 4.875 inches (124 mm) from bottom of deck.

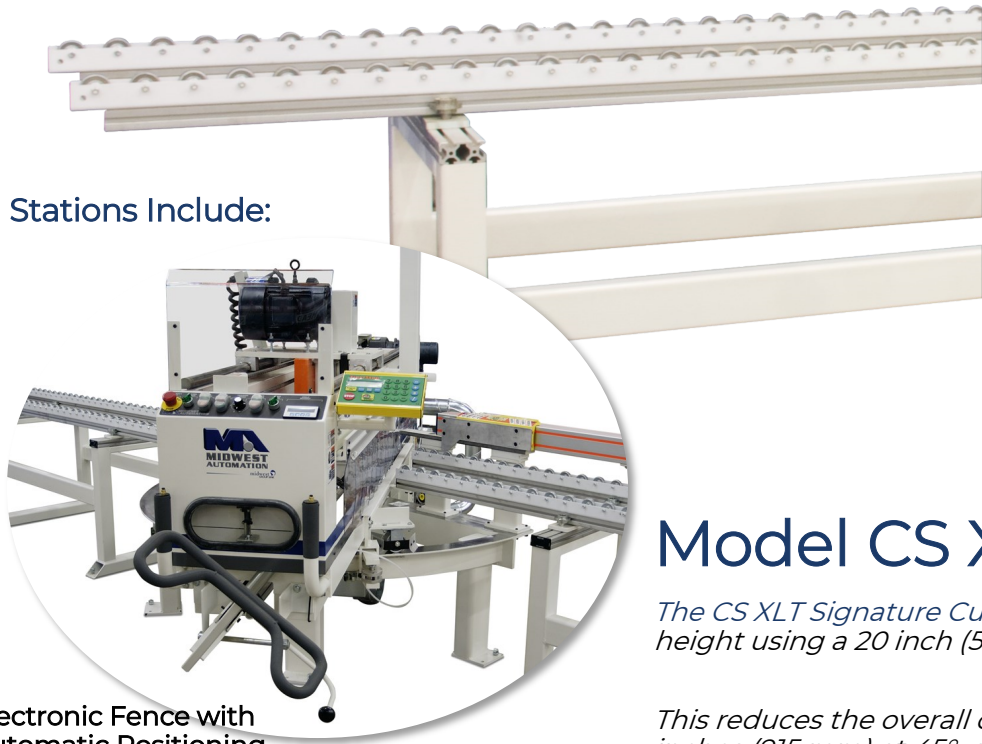
### Benefit of Evans Midwest Cutting Stations Include:

- Precision Results
- Unparalleled Dependability & Service
- Best Resale values in the Industry

#### ACCESSORIES



STANDARD CONVEYOR

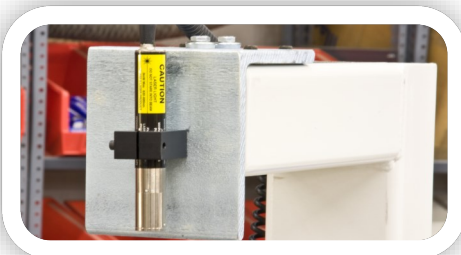


Electronic Fence with Automatic Positioning

## Model CS XLT

The CS XLT Signature Cutting Station is designed for fabricating a wide variety of kitchen countertop and vanity sizes. The CS XLT has an overall cutting length of 53.5 inches (1360 mm) at 90° angle of cut, and 37.5 inches (950 mm) at 45° angle of cut. Maximum backsplash height is 4.875 inches (124 mm) from bottom of deck.

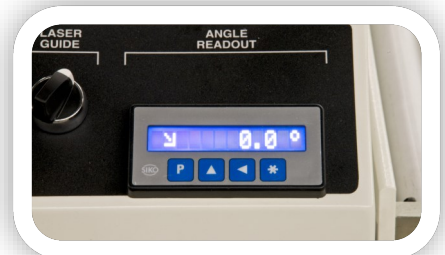
This reduces the overall backsplash height using a 20 inch (508 mm) diameter pipe to 4.875 inches (124 mm) at 45° angle of cut, and 3.875 inches (98 mm) from bottom of deck.



LASER GUIDE



DUST MANIFOLD KIT



VARIABLE MITER



*Domestic Parts and Service  
Dependable, Uninterrupted Service*



## XLT Cutting Station

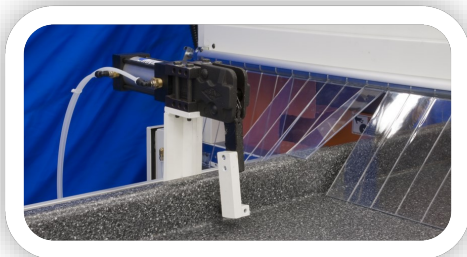
*Cutting Station is the same size as the CS XL with an increased cutting length to 50 inches (1290 mm) at 90° angle of cuts, and 36° angle of cut, but increases the maximum backsplash height to 6.875 inches from the bottom of deck.*

*cutting length to 50 inches (1290 mm) at 90° angle of cuts, and 36° angle of cut, but increases the maximum backsplash height to 6.875 inches from the bottom of deck*

### ACCESSORIES



**HEAVY-DUTY ROLLER CONVEYOR**



**BACKSPASH CLAMP**



**SUPPORT RINGS**



**DUST ENCLOSURE KIT**



# EVANS MIDWEST

 CHOICE MACHINERY GROUP



11441 East Lakewood Blvd.  
Holland MI 49424  
616.546.8225  
[evansmidwest.com](http://evansmidwest.com)